



MONTHLY MEMBERSHIP PROGRESS REPORT

District 34 C

Results as of: 06/30/2018

GMT: STACEY JONES

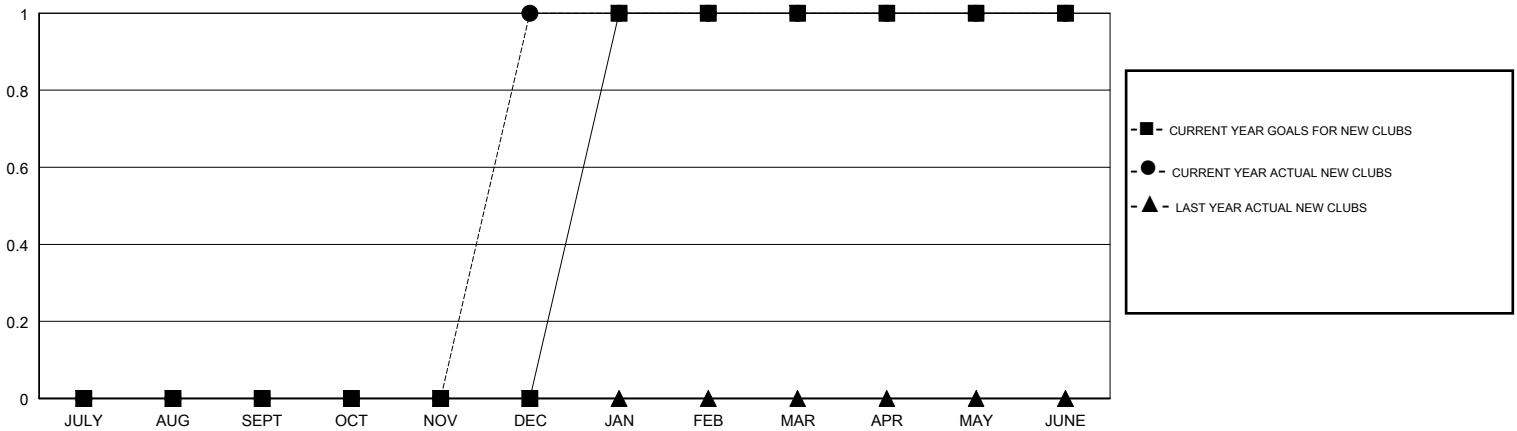
LOCATION ALABAMA

GMT CA

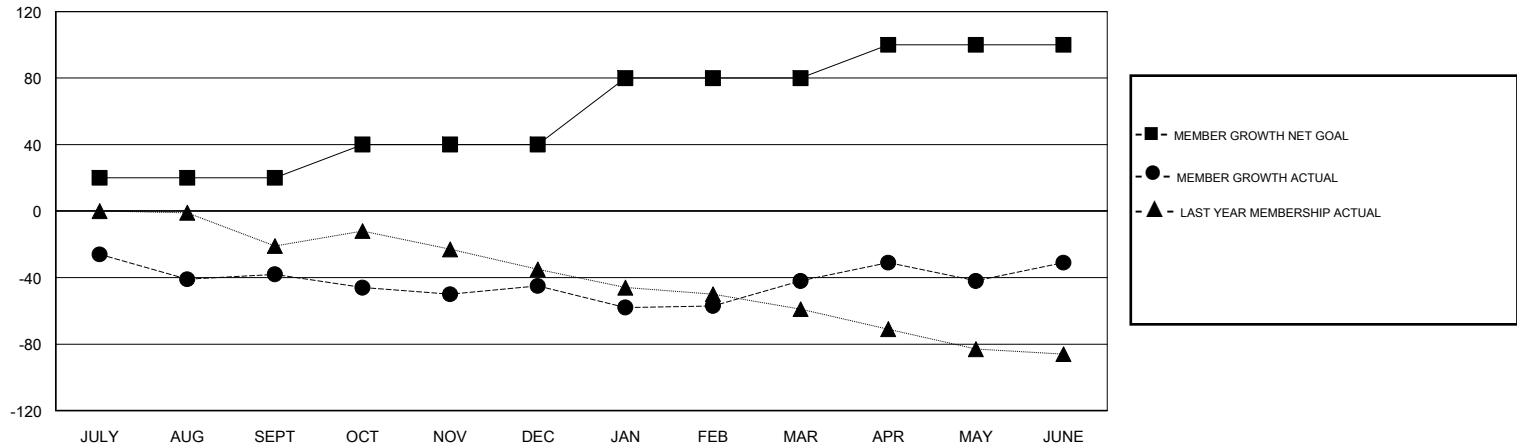
| Clubs | | | |
|-----------------------|---------------|-----------|---------------|
| RESULTS FOR 2017-2018 | | | |
| QUARTER | NEW CLUB GOAL | NEW CLUBS | DROPPED CLUBS |
| JULY/AUG/SEPT | 0 | 0 | 0 |
| OCT/NOV/DEC | 0 | 1 | 1 |
| JAN/FEB/MAR | 1 | 0 | 0 |
| APR/MAY/JUNE | 0 | 0 | 0 |

| Members | | | |
|-----------------------|------------------------|----------------------|--|
| RESULTS FOR 2017-2018 | | | |
| QUARTER | MEMBER GROWTH NET GOAL | MEMBER GROWTH ACTUAL | DROPPED MEMBERS ACTUAL (including transfers) |
| JULY/AUG/SEPT | 20 | 29 | 64 |
| OCT/NOV/DEC | 20 | 45 | 50 |
| JAN/FEB/MAR | 40 | 38 | 32 |
| APR/MAY/JUNE | 20 | 74 | 57 |

GOALS AND ACTUAL NEW CLUBS CUMULATIVE



GOALS AND ACTUAL MEMBERS CUMULATIVE



| | | | | |
|------------------|---|----------------------------|--|---|
| DROPPED CLUBS: 1 | 30 CLUBS OF 41 ADDED 1 OR MORE NEW MEMBERS | <u>GENDER DISTRIBUTION</u> | | |
| | | MALE | 722 (67.73%) | |
| DROPPED MEMBERS | CLICK HERE FOR CUMULATIVE MEMBERSHIP DATA | FEMALE | 344 (32.27%) | |
| DECEASED | | 12 | Women Percentage Fiscal Year Goal: 30% | |
| CLUB CANCELLED | | 17 | TOTAL FAMILY UNIT MEMBERS | 0 |
| OTHER | | 174 | FAMILY MEMBERS PAYING HALF DUES | 0 |
| TOTAL | 203 | | | |